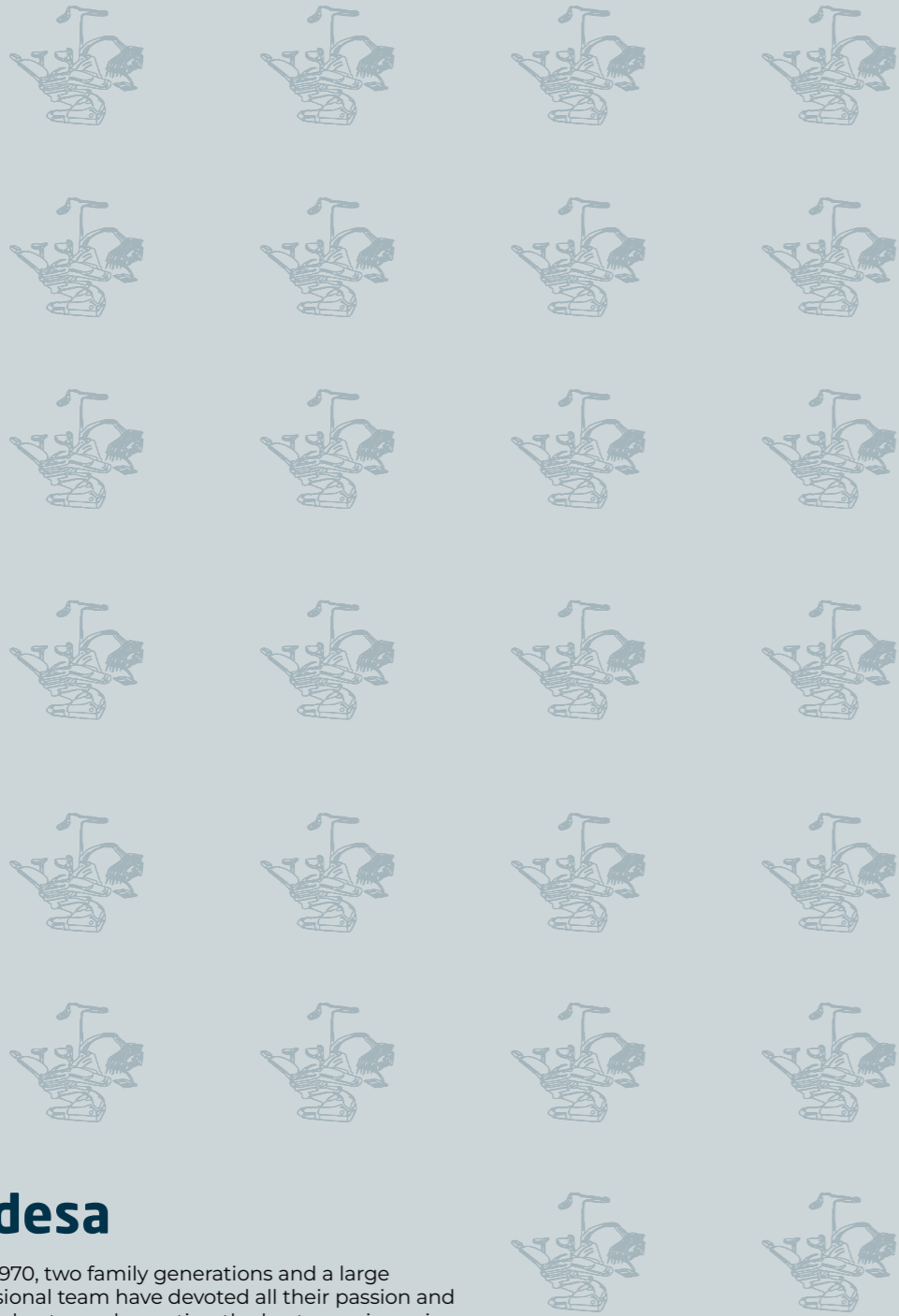


**F\_Electra**  
ambi



**Fedesa**

# F\_Index



## Fedesa

Since 1970, two family generations and a large professional team have devoted all their passion and knowledge towards creating the best experience in dental care for dentists and their patients.

We design and manufacture high performance dental units in Spain, in which every component has been developed to be comfortable, efficient and long-lasting.

### **1\_About us**

1.1\_Insights

1.2\_Claim

1.3\_Reasons to believe

### **2\_F\_Electra**

2.1\_Premium

2.2\_Lux

2.3\_Eco

2.4\_Orthodontics

### **3\_Finishes**

3.1\_Textile Colour

3.2\_Upholstery

3.3\_Measures

3.4\_Illumination Lamp

3.5\_Monitor

3.6\_Control Pedals

3.7\_Mobile Units

3.8\_Stools

### **4\_Fedesa**

4.1\_History



# Fedesa

## Your essential teammate, always by your side

FEDESA is a dentist's essential teammate - equipment you can rely on for doing your job and a team that shares the same passion for dental health.

A dental chair always goes alongside a dentist. It's their best ally for inspiring trust and peace of mind in patients.

At FEDESA, we are part of your team, and we are always at your side so that nothing gets in the way of your patients' treatment.

# Fedesa

## High performance, maximum reliability

**FEDESA has been the market leader in high performance dental units in Spain for over 50 years.**

With our experience in design, processes and manufacturing technology, we are able to make high performance equipment accessible to all kinds of clinics.

All our work is focussed on offering you the best experience, service and durability.

Dentist take centre stage and are the core of all that we do. They have a very evident vocation that defines them as individuals.

This vocation is shared by the whole FEDESA team. A family united by a passion to help professionals in the dental sector.



### **A great, leading company that casts its legacy towards the future**

FEDESA has been the undisputed leader of the Spanish market for decades. As well as leading in terms of market share, we are a great company because of our history and the strength of our human resources.

We do not settle for what has already been done. Rather, we look towards the future with an ambition for continual improvement, innovation and sustainability.



### **High performance dental units for the most discerning professionals**

The most discerning dentists choose FEDESA because our high performance dental units are designed and manufactured to be the essential teammate that makes your job easier for many years to come.

We guarantee the performance and durability of our units as a result of our rigorous production processes, quality control and external certifications.



### **A committed, passionate team that is always there for dentists**

The FEDESA team shares the same values that it has transmitted from generation to generation.

All our work aims to make a dentist's job easier.



# For the most discerning professionals

We design and manufacture high performance dental units in Spain, in which every component has been developed to be comfortable, efficient and long-lasting.

  
**60.000**  
units used by  
dentists from 79  
countries.

  
**15** years  
Useful life of

  
**3.200**  
models in stock for  
48-hour dispatch to  
anywhere in Europe

  
**10.000m<sup>2</sup>**  
production and  
development centre  
in Madrid measuring

Dentists treat patients with serious oral health problems. They need to diagnose, treat and follow up with patients until they have recovered.

Dentists also conduct preventative treatments to ensure their patients' oral health.

Just like their patients, dentists need quick responses and the ability to react in adverse circumstances.

We conduct maintenance and follow-up to ensure maximum performance for your equipment.

FEDESA is a dentist's essential teammate, always at their side, sharing the same passion for oral health.

# F\_Electra

## ¿What is the Electra Ambi model?

e

With the dental unit Electra Ambi, FEDESA provides a perfect solution for a dental cabinet with a wide arrange of users. Focused, as usual, in the functionality of the unit and the comfortability of the patient's support, Ambi combines all the features of the Electra treatment unit and makes them available for right and left-handed doctors, covering all major needs in every doctor's clinic.



The **Ambi unit** enables a better communication and dialogue between operator and patient thanks to its knee-break system. The synchronized movement of backrest and footrest allows for a smooth transition from a sitting position to the operations position.

# F\_Electra

ambi

## Electra Ambi



Is presented with relevant features which help operators in their daily work reducing fatigue, saving movements and adapting the unit to the different positions that the treatment requires. The doctor's unit is attached to a swivelling and compensated arm with two simple movements, to change from right-handed use to left-handed use. The various safety systems present in the chair's lowering function, backrest and assistant's workstation ensure and incident-free use in all its versions.



### Control Panel

Enables the control of all the functions of the dental unit in an easy and intuitive manner, from the operation light, to the emergency position and return to zero position. The parameters of the micro-motor (speed, torque, light, direction of rotation, etc.), as well as the functions of the scaler, can be also displayed in the touch panel in those versions where this option is available



### Instrument tray

Main doctor tray incorporates a rotational movement on itself which offers possibility to locate the tray in the best position for operator.

# F\_Electra

ambi



As in every Fedesa chair, the low starting position allows for a very comfortable access to the chair for every patient. The backrest's removable flaps and the adjustable headrest allow for a perfect accessibility in every treatment.



### The Cuspidor

Incorporates a removable faucet and bowl. The bowl is made of polyamide, and it can be removed from the unit, as well as the faucet, for an easier cleaning and disinfection process, thus providing higher levels of hygiene. The colour of the bowl can match the colour of the upholstery. The water bowl can rotate 180°, allowing for an easier rinsing during and after the treatment.







# Fedesa

## We are accessible to all kinds of clinics

Dentists take centre stage and they are at the core of all that we do. All our work is focussed on offering you the best experience, service and durability.

With our experience in design, processes and manufacturing technology, we are able to make high performance equipment accessible to all kinds of clinics.

Choosing FEDESA is a matter of trust.

# Finishes

# F\_Electra

## Textile colour finishes that combine with the dental unit

We have selected a wide range of colours for standard use to integrate with modern facilities.



## Upholstery

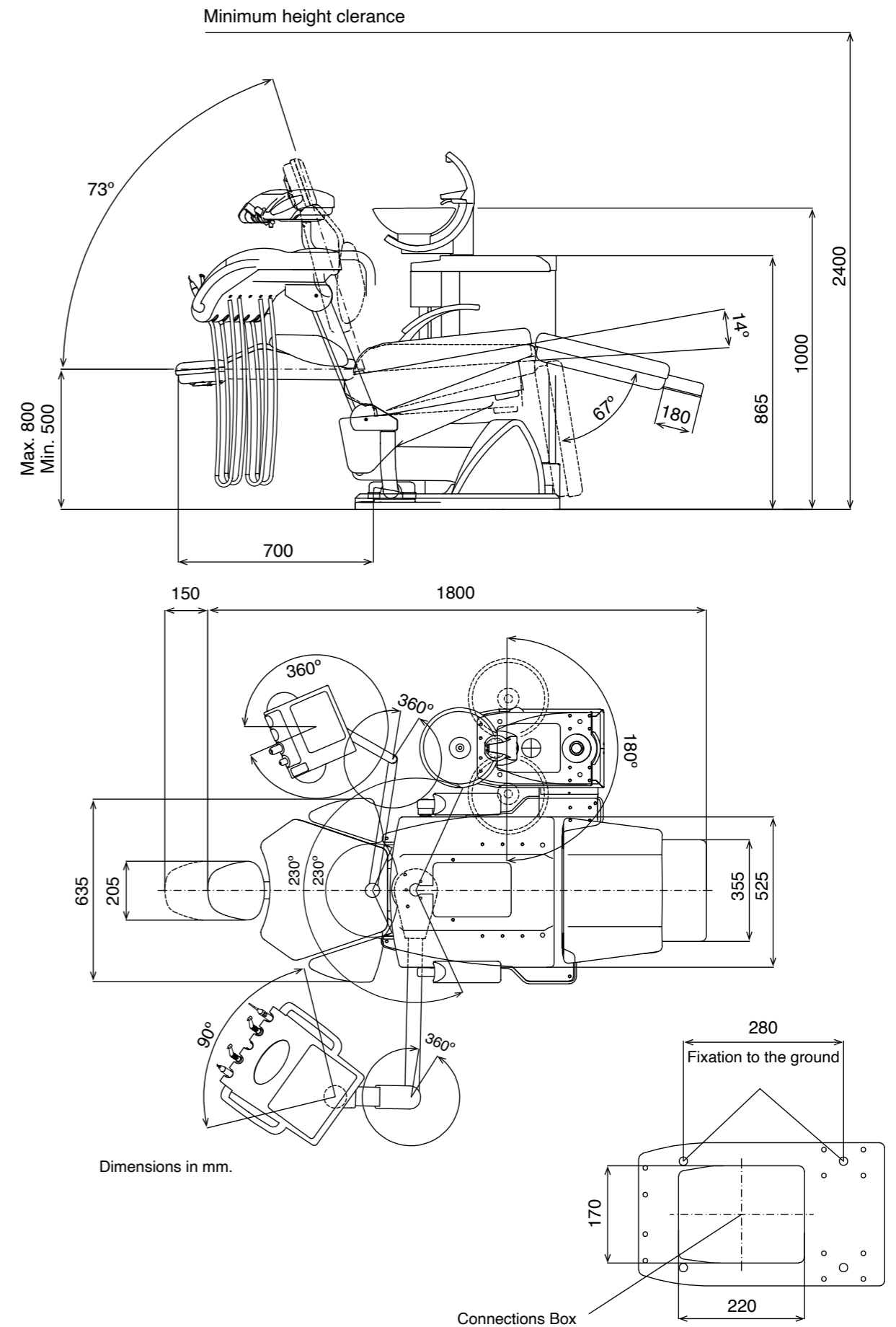
FEDESA provides upholstery on all its dental units that add to the design of its equipment, improving their convenience and comfort.

Low maintenance flame retardant upholstery without seams, washable and excellent resistance to use.

The extensive catalogue of upholstery colours also comes with viscoelastic upholstery (memory foam).

## Measures of the dental unit

The measurements indicated on the drawing will help you place your equipment in your surgery.



# Options

# F\_Electra

## Illumination lamp

All FEDESA dental units include lighting equipment that can be changed as an option.

EDI Lamp (25,000 lux halogen lamp). MAIA Lamp (35,000 lux LED lamp). ALYA Lamp (50,000 lux LED lamp).



Edi model



Maia model



Alya model

## Control pedals

There are two types: pneumatic pedals with instrument rpm control, water and chip blower selector, and a multifunction pedal for instrument control and to adjust the chair.



Progressive Pneumatic Model



Multifunction Model



Pneumatic Model

## Monitor

Slim, lightweight, with a 17" screen and adaptable to the various positions required for use by the doctor and patient.



## Intraoral camera

High-resolution camera that can be added to the main tray and to the auxiliary tray. Small and very light, touch activation and detachable.



## Mobile Units

There are various ranges of mobile units: **Premium**, **Lux** and **Eco**. The Premium range features an induction micromotor integrated into the control panel. The Lux range has an electric brush micromotor and the Eco range features pneumatic instrumentation.



Astral Premium Model



Astral Lux Model



Astral Eco Model

## Stools

FEDESA has three types of stools (the **Astral**, **Pony** and **Sory** models) available with or without backrests and with a footrest ring. Surround lumbar support. They are manufactured in stainless steel and feature a five-wheel base, as well as gas piston height adjustment. A wide range of colours and textures in the upholstery catalogue.



Astral mModel

Astral - A Model



Pony Model with backrest

Pony Model without backrest



Sory Model



# Fedesa

## United by the same passion

Dentists have a very notable vocation that defines them as people. Their profession is in their very DNA. In their nature is a passion to help and to treat patients.

This vocation is shared by the whole FEDESA team. A family united by the passion to help professionals in the dental sector.



### Manufacturing dental units since 1970

From the origins of **FEDESA** back in the 1970s and right up to the present day, we have dedicated our efforts to meet the needs of dentists.

We are experts in designing, manufacturing, and marketing dental units. Our extensive catalogue of solutions caters for all the needs of today's dentists.

Our products meet all national and international regulations and certifications that ensure the quality of all our products. A wide network of agents approved by our brand for the domestic market, as in the rest of the world, collaborate with us to offer the best customer service.



FEDESA is a global company with an unbeatable history in quality, technology and service.

It has an extensive network of distributors all over the world and an excellent professional team that is committed to the company.



# Fedesa

**NUEVA FEDESA, S.A.**

Avda. Madrid, nº 45. 28500 Arganda del Rey (Madrid) España  
Tel.: 34 - 91 871 23 83. Fax: 34 - 91 871 64 88  
fedesa@fedesa.com - www.fedesa.com

FEDESA se reserva el derecho de introducir cualquier cambio en beneficio del producto  
CT9A23-1I. (1000 EJ. 20-03-019)  
Diseño: De Ledesma. Imprime: Gráficas Aries. Depósito legal: M-7XXXXX

# Fedesa

High performance, maximum reliability